

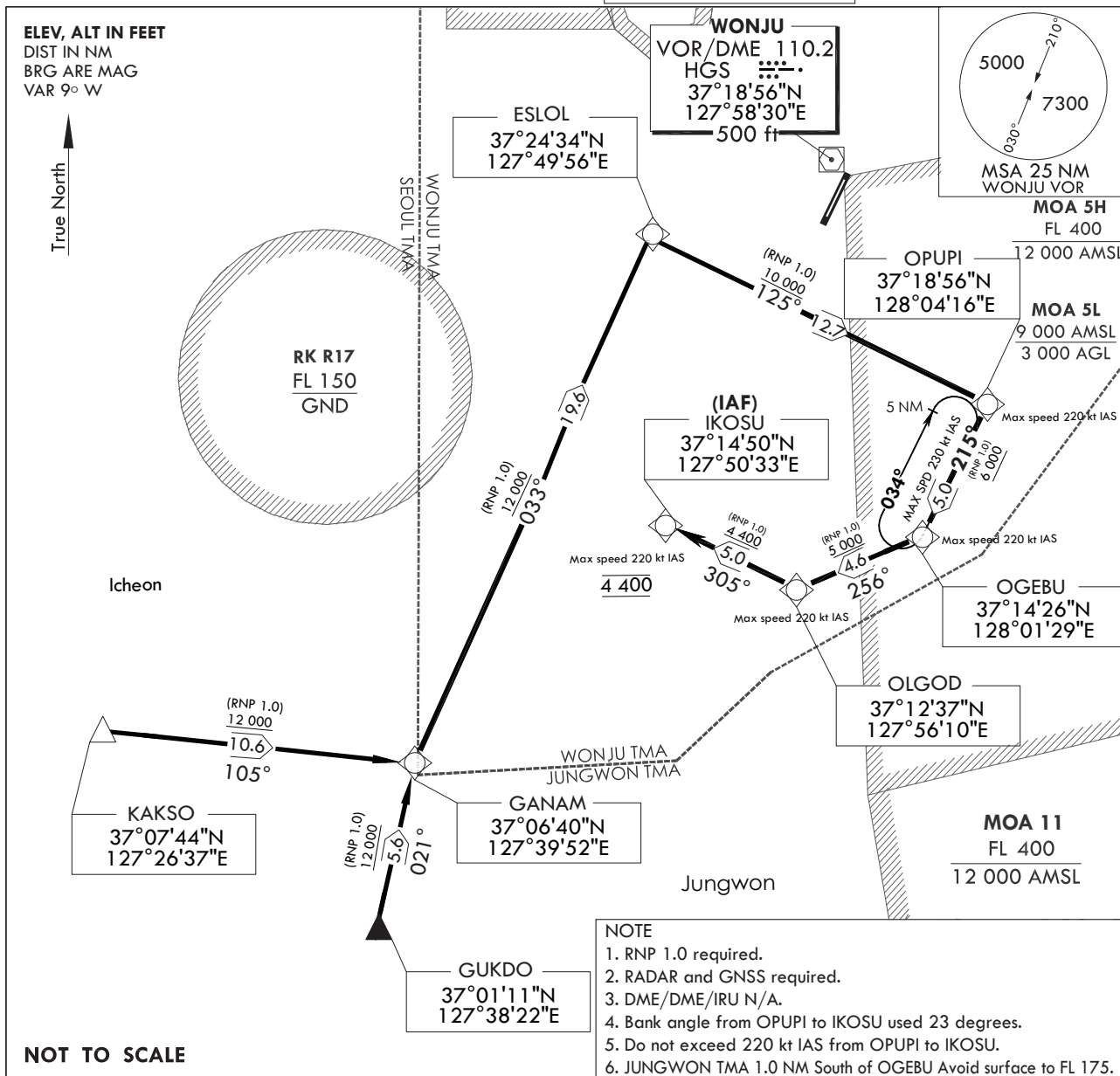
**STANDARD ARRIVAL CHART
INSTRUMENT(STAR)**

Note : Arrival under U.S TERPS.

TRANSITION ALT 14 000
TRANSITION LVL FL 140

WONJU APP 130.2
234.4 255.0
WONJU TWR 126.2 118.325
236.6 265.5

**WONJU/Wonju(RKNW)
RWY 03
RNAV(GNSS) GANAM 1**



NOT TO SCALE

ARRIVAL ROUTE DESCRIPTION

KAKSO transition : From KAKSO on track 105° to cross GANAM at or above 12 000 ft thence....

GUKDO transition : From GUKDO on track 021° to cross GANAM at or above 12 000 ft thence....

....From GANAM on track 033° to cross ESLOL at or above 12 000 ft,
then on track 125° to cross OPUPI at or above 10 000 ft, then on track 215° to cross OLGOD at or above 6 000 ft,
then on track 256° to cross OLGOD at or above 5 000 ft, then on track 305° to cross IKOSU at 4 400 ft.
Expect RNAV approach.

Change : Information of GUKDO(reporting requirement) and IKOSU(IAF).

WONJU/Wonju(RKNW)
RWY 03
RNAV(GNSS) GANAM 1

AERONAUTICAL DATA TABULATION

Standard Instrument Arrival Procedure Coding Tables

RNAV(GNSS) GANAM 1 - KAKSO Transition

Serial Number	Path Descriptor	Waypoint Identifier	Fly -Over	Course/Track ° M(° T)	Distance (NM)	Turn Direction	Altitude (ft)	Speed (kt)	Coordinates	VPA /TCH	Navigation specification	Remarks
001	TF	KAKSO	-	-	-	-	-	-	37°07'44.60"N 127°26'37.40"E	-	RNP APCH	-
002	TF	GANAM	-	105(095.7)	10.6	-	+12 000	-	37°06'40.05"N 127°39'52.09"E	-	RNP APCH	-

RNAV(GNSS) GANAM 1 - GUKDO Transition

Serial Number	Path Descriptor	Waypoint Identifier	Fly -Over	Course/Track ° M(° T)	Distance (NM)	Turn Direction	Altitude (ft)	Speed (kt)	Coordinates	VPA /TCH	Navigation specification	Remarks
001	TF	GUKDO	-	-	-	-	-	-	37°01'10.93"N 127°38'22.86"E	-	RNP APCH	-
002	TF	GANAM	-	021(012.3)	5.6	-	+12 000	-	37°06'40.05"N 127°39'52.09"E	-	RNP APCH	-

RNAV(GNSS) GANAM 1

Serial Number	Path Descriptor	Waypoint Identifier	Fly -Over	Course/Track ° M(° T)	Distance (NM)	Turn Direction	Altitude (ft)	Speed (kt)	Coordinates	VPA /TCH	Navigation specification	Remarks
001	TF	GANAM	-	-	-	-	+12 000	-	37°06'40.05"N 127°39'52.09"E	-	RNP APCH	-
002	TF	ESLQ	-	033(024.1)	19.6	-	+12 000	-	37°24'34.20"N 127°49'55.77"E	-	RNP APCH	-
003	TF	OPUP	-	125(116.2)	12.7	-	+10 000	-220	37°18'55.50"N 128°04'15.64"E	-	RNP APCH	-
004	TF	OGEU	-	215(206.3)	5.0	-	+6 000	-220	37°14'26.31"N 128°01'28.98"E	-	RNP APCH	-
005	TF	OLGOD	-	256(246.9)	4.6	-	+5 000	-220	37°12'37.42"N 127°56'09.75"E	-	RNP APCH	IAF
006	TF	IKOSU	-	305(296.3)	5.0	-	4 400	-220	37°14'50.45"N 127°50'32.84"E	-	RNP APCH	IAF/IF

HOLDING DATA

Serial Number	Path Descriptor	Waypoint Identifier	Fly -Over	Course/Track ° M(° T)	Distance (NM)	Turn Direction	Altitude (ft)	Speed (kt)	Coordinates	Remarks
001	TF	OGEU	-	215(206.3)	5.0	-	-	-230	37°14'26.31"N 128°01'28.98"E	Holding at OGEU NE Right Turn 214° Inbound 5 NM Leg.

Change : Information of remarks for IKOSU and Amended coding table.

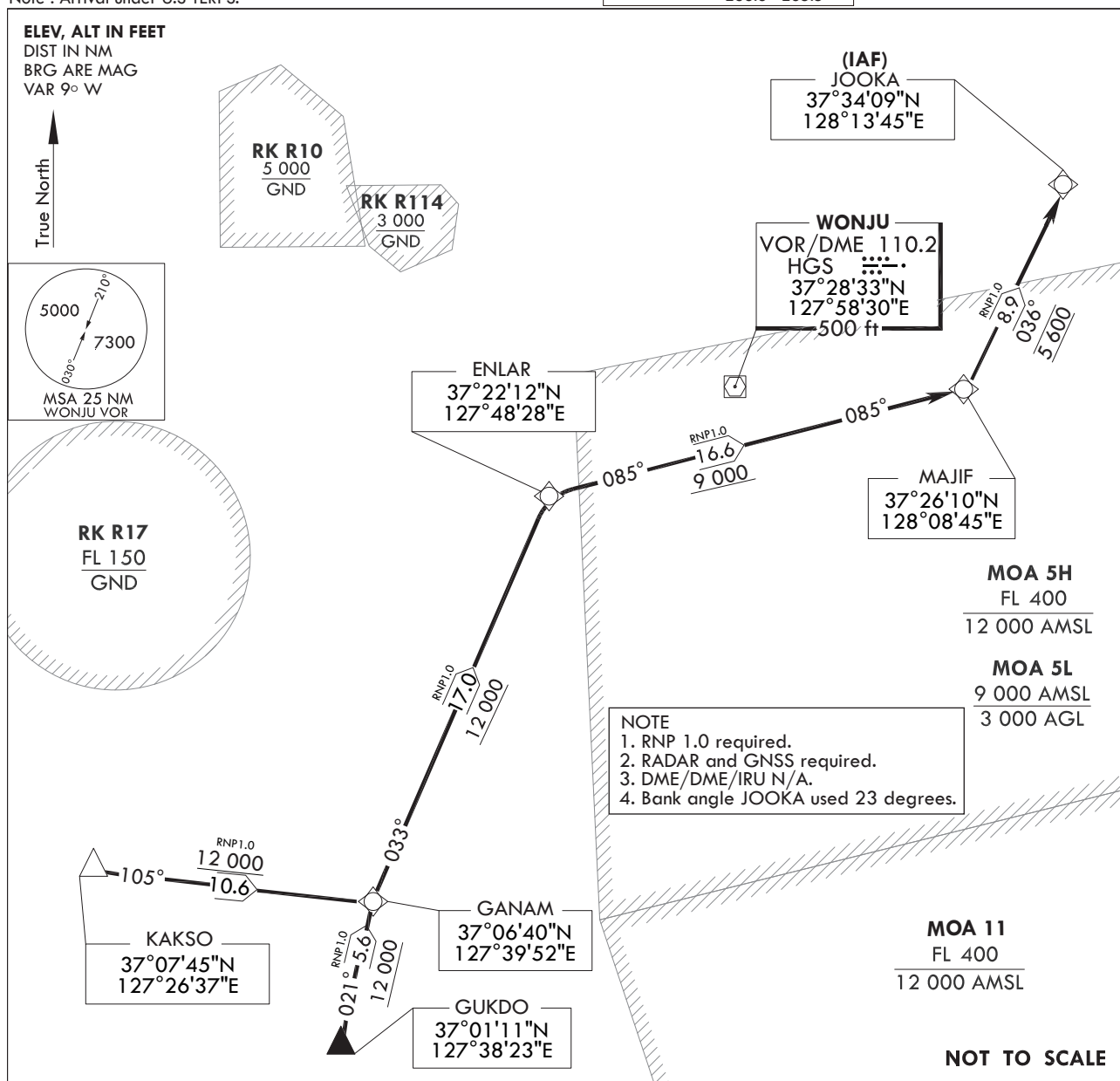
**STANDARD ARRIVAL CHART
INSTRUMENT(STAR)**

TRANSITION ALT 14 000
TRANSITION LVL FL 140

WONJU APP 130.2
234.4 255.0
WONJU TWR 126.2 118.325
236.6 265.5

**WONJU/Wonju(RKNW)
RWY 21
RNAV(GNSS) GANAM 2**

Note : Arrival under U.S TERPS.



ARRIVAL ROUTE DESCRIPTION

KAKSO transition :

From KAKSO on track 105° to cross GANAM at or above 12 000 ft thence....

GUKDO transition :

From GUKDO on track 021° to cross GANAM at or above 12 000 ft thence....

....From GANAM on track 033° to cross ENLAR at or above 12 000 ft,
then on track 085° to cross MAJIF at or above 9 000 ft, then on track
036° to cross JOOKA at 5 600 ft. Expect RNAV approach.

Change : Information of GUKDO(reporting requirement) and JOOKA(IAF).

AERONAUTICAL DATA TABULATION

Standard Instrument Arrival Procedure Coding Tables

RNAV(GNSS) GANAM 2 - KAKSO Transition

Serial Number	Path Descriptor	Waypoint Identifier	Fly -Over	Course/Track ° M(° T)	Distance (NM)	Turn Direction	Altitude (ft)	Speed (kt)	Coordinates	VPA /TCH	Navigation specification	Remarks
001	TF	KAKSO	-	-	-	-	-	-	37°07'44.60"N 127°26'37.40"E	-	RNP APCH	-
002	TF	GANAM	-	105(095.7)	10.6	-	+12 000	-	37°06'40.05"N 127°39'52.09"E	-	RNP APCH	-

RNAV(GNSS) GANAM 2 - GUKDO Transition

Serial Number	Path Descriptor	Waypoint Identifier	Fly -Over	Course/Track ° M(° T)	Distance (NM)	Turn Direction	Altitude (ft)	Speed (kt)	Coordinates	VPA /TCH	Navigation specification	Remarks
001	TF	GUKDO	-	-	-	-	-	-	37°01'10.93"N 127°38'22.86"E	-	RNP APCH	-
002	TF	GANAM	-	021(012.3)	5.6	-	+12 000	-	37°06'40.05"N 127°39'52.09"E	-	RNP APCH	-

RNAV(GNSS) GANAM 2

Serial Number	Path Descriptor	Waypoint Identifier	Fly -Over	Course/Track ° M(° T)	Distance (NM)	Turn Direction	Altitude (ft)	Speed (kt)	Coordinates	VPA /TCH	Navigation specification	Remarks
001	TF	GANAM	-	-	-	-	+12 000	-	37°06'40.05"N 127°39'52.09"E	-	RNP APCH	-
002	TF	ENLAR	-	033(023.8)	17.0	-	+12 000	-	37°22'12.18"N 127°48'28.24"E	-	RNP APCH	-
003	TF	MAJIF	-	085(076.1)	16.6	-	+9 000	-	37°26'09.80"N 128°08'45.31"E	-	RNP APCH	-
004	TF	JOOKA	-	036(026.5)	8.9	-	5 600	-	37°34'08.84"N 128°13'45.27"E	-	RNP APCH	IAF

Change : Information of remarks for JOOKA and Amended coding table.